

## Where can I find the part numbers for my suspension?

If you go to the download section you will find the air suspension and mechanical suspension spare parts documents. Here you will find part drawings of the suspension components with dimensions to be able to identify them.

### SUSPENSIONS MANUALS & PARTS

Weweler Air Suspension Manual  
Granning Air Suspension Manual  
Air Suspension Spare Parts

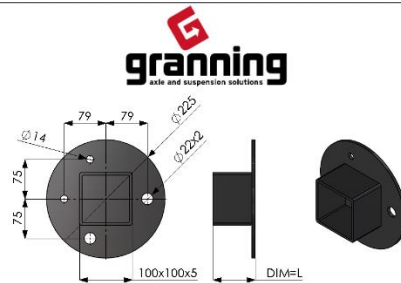
Mechanical Suspension Manual  
Mechanical Suspension Parts

### ADDITIONAL INFORMATION

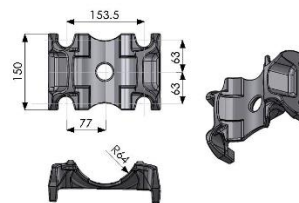
MEI Automatic Slack Adjuster Fitment  
Haldex Automatic Slack Adjuster Fitment  
Haldex Load Sensing Valve Setting  
Continental Tyre Book Information  
Fifth Wheel Operating Instructions  
Slack Adjuster Fitment  
Brake Chamber Fitment  
Revised Standards for Agricultural Vehicles



| Part Number | Length (mm) | Thread Length (mm) | Thread Size |
|-------------|-------------|--------------------|-------------|
| 31720       | 275         | 65                 | M22x1.5     |
| 31721       | 302         | 75                 | M22x1.5     |
| 31722       | 312         | 75                 | M22x1.5     |
| 31730       | 342         | 75                 | M22x1.5     |
| 31605       | 270         | 74                 | M24x2       |
| 31630       | 295         | 74                 | M24x2       |
| 31646       | 320         | 74                 | M24x2       |
| 31659       | 350         | 80                 | M24x2       |
| 13033A      | 304.5       | 150                | M24x2       |
| 13032A      | 334.5       | 90                 | M24x2       |
| 13144       | 313.5       | 80                 | M24x2       |
| 13145       | 280.5       | 80                 | M24x2       |



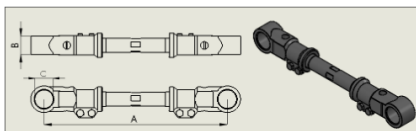
12163 Pedestal L=40mm  
12164 Pedestal L=80mm  
12165 Pedestal L=130mm



31601 axle seat  
31737 heavy duty option available for applications over 10Tonne



### Adjustable Torque Arms

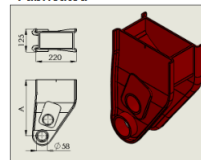


| Part No. | Description                 | Dimensions (mm) |          |          |    |     | Application |
|----------|-----------------------------|-----------------|----------|----------|----|-----|-------------|
|          |                             | A - Min.        | A - Nom. | A - Max. | B  | C   |             |
| 36048    | Adjustable Torque Arm 405mm | 375             | 420      | 465      | 48 | Ø47 | OS/US/UUS   |
| 36055    | Adjustable Torque Arm 445mm | 405             | 445      | 485      | 48 | Ø47 | OS/US       |
| 36074    | Adjustable Torque Arm 365mm | 340             | 352.5    | 365      | 48 | Ø47 | OS/US/UUS   |
| 36077    | Adjustable Torque Arm 480mm | 450             | 492.5    | 535      | 48 | Ø47 | OS          |
| 36092    | Adjustable Torque Arm 373mm | 335             | 355      | 375      | 48 | Ø47 | UUS         |
| 36093    | Adjustable Torque Arm 540mm | 470             | 517.5    | 565      | 48 | Ø47 | OS/US/UUS   |
| 36094    | Adjustable Torque Arm 560mm | 525             | 572.5    | 620      | 48 | Ø47 | OS/UUS      |



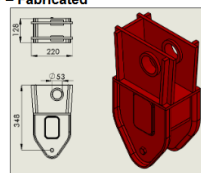
### Individual Mechanical Suspension Parts

#### Front Hanger – Fabricated



| Part No. | Description        | Dimension 'A' | Application          |
|----------|--------------------|---------------|----------------------|
| 36026    | Front Hanger 305mm | 305mm         | Overslung/Underslung |
| 36134    | Front Hanger 265mm | 265mm         | Overslung/Underslung |

#### Front Hanger – Fabricated



| Part No. | Description | Application |
|----------|-------------|-------------|
|          |             |             |