

Can I use ISO or DIN wheel nuts?

ISO wheel nuts are used on wheel rims that use the axle hub spigots to centre it on the axle. There is a tight tolerance on the wheel rim pilot hole to make sure it aligns properly on the hub spigot.

DIN wheel nuts and washers are used on wheel rims where the DIN washer chamfer and the wheel rim stud hole chamfer centre the wheel rim on the axle. It is important the wheel rim hole chamfer is correct for a DIN washer.

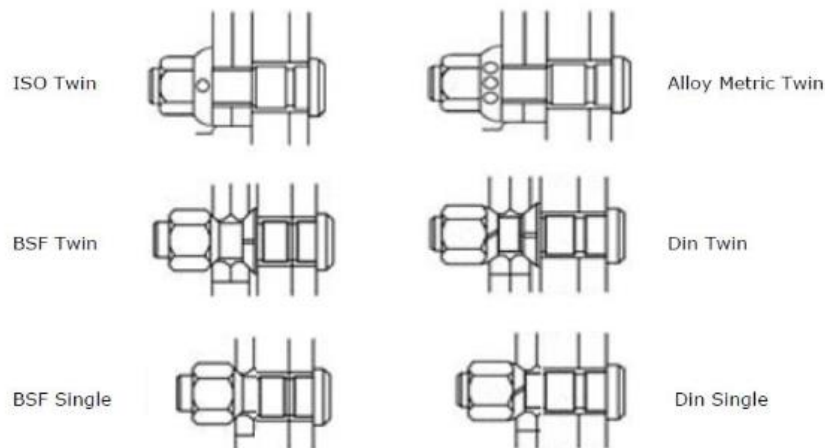
The standard Granning axle wheel stud can be used with ISO or DIN wheel nuts but it is very important to check your wheel rim to know if it is suitable for ISO or DIN nuts.

Wheel fasteners

It is vital that operators and manufacturers ensure that the correct type of wheel cones and nuts are fitted to specified bolts, before torquing to full setting.

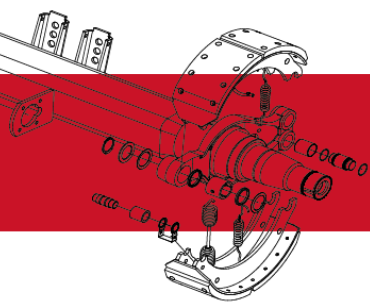
The below diagrams show the six main nut and bolt configurations.

Wheel Rims and Fasteners of different standards must not be interchanged or mixed in any combination.

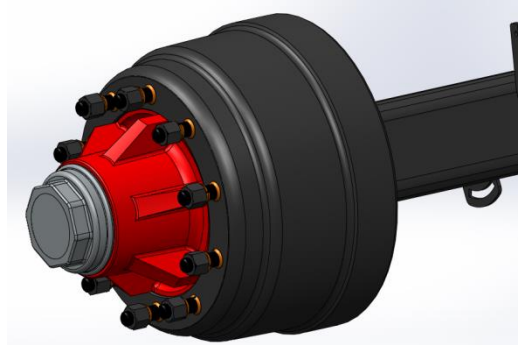
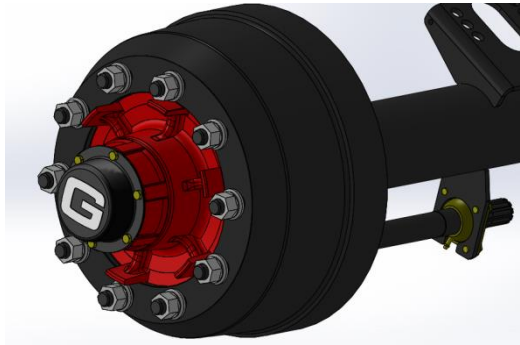


Mating surfaces between Hubs and Wheel Rims should be primer painted only. Thick gloss will result in loss of torque.

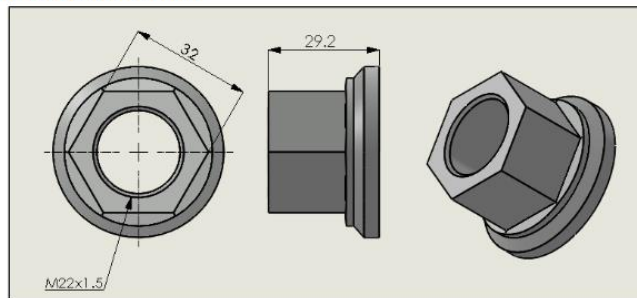
	Ft.Lb	N.m
Wheel nuts - BSF / DIN	400 - 450	550 - 600
Wheel nuts - ISO	442 - 465	600 - 630
Wheel nuts - Alloy	442 - 465	600 - 630



Below Granning axles are shown with ISO and DIN wheel nuts.



61381 – M22 ISO Wheel Nut



61383 – M22 DIN Wheel Nut + Washers (61372 & 61371)

